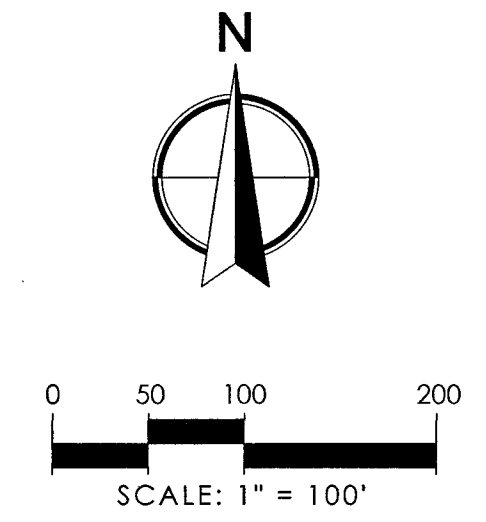


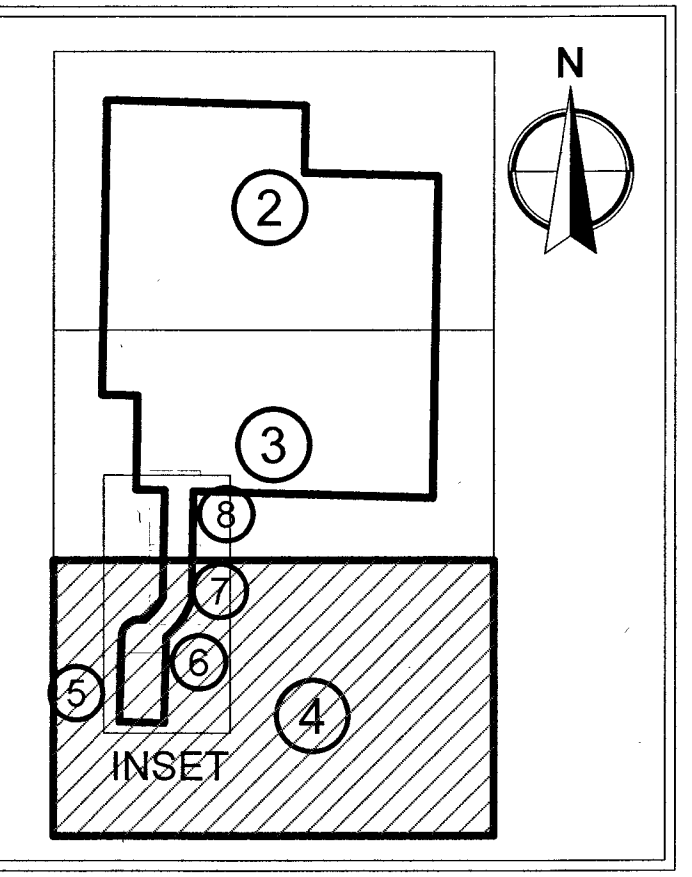
# CENTRAL PARK COMMERCE CENTER MUPD

BEING A PORTION OF SECTIONS 29 & 32, TOWNSHIP 43S, RANGE 40E  
PALM BEACH COUNTY, FLORIDA

104

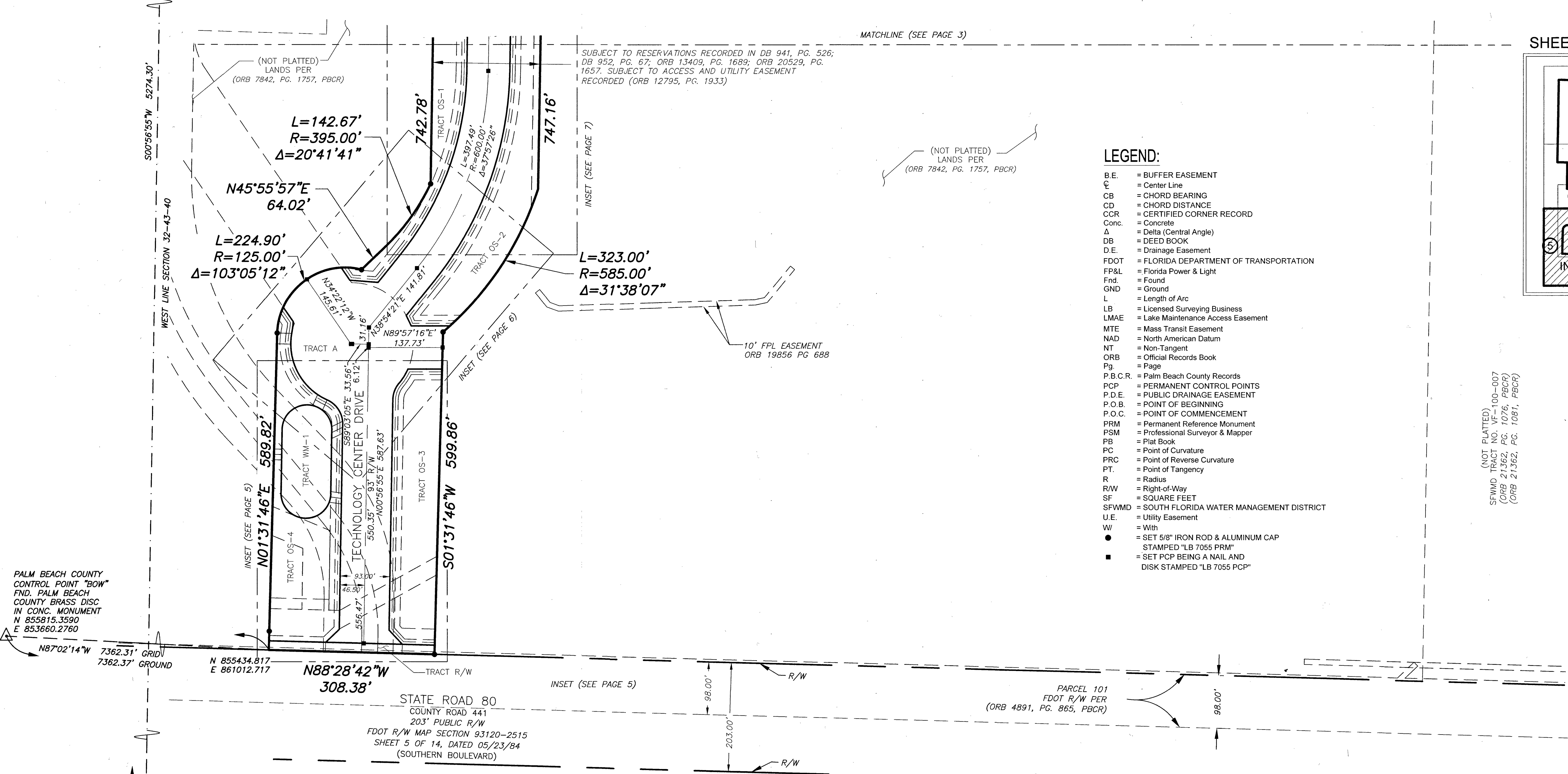


SHEET MAP



NOT TO SCALE

- LEGEND:**
- B.E. = BUFFER EASEMENT
  - CL = Center Line
  - CB = CHORD BEARING
  - CD = CHORD DISTANCE
  - CCR = CERTIFIED CORNER RECORD
  - Conc. = Concrete
  - Δ = Delta (Central Angle)
  - DB = DEED BOOK
  - D.E. = Drainage Easement
  - FDOT = FLORIDA DEPARTMENT OF TRANSPORTATION
  - FP&L = Florida Power & Light
  - Fnd. = Found
  - GND = Ground
  - L = Length of Arc
  - LB = Licensed Surveying Business
  - LMAE = Lake Maintenance Access Easement
  - MTE = Mass Transit Easement
  - NAD = North American Datum
  - NT = Non-Tangent
  - ORB = Official Records Book
  - Pg. = Page
  - P.B.C.R. = Palm Beach County Records
  - PCP = PERMANENT CONTROL POINTS
  - P.D.E. = PUBLIC DRAINAGE EASEMENT
  - P.O.B. = POINT OF BEGINNING
  - P.O.C. = POINT OF COMMENCEMENT
  - PRM = Permanent Reference Monument
  - PSM = Professional Surveyor & Mapper
  - PB = Plat Book
  - PC = Point of Curvature
  - PRC = Point of Reverse Curvature
  - PT. = Point of Tangency
  - R = Radius
  - R/W = Right-of-Way
  - SF = SQUARE FEET
  - SFWMD = SOUTH FLORIDA WATER MANAGEMENT DISTRICT
  - U.E. = Utility Easement
  - W = With
  - = SET 5/8" IRON ROD & ALUMINUM CAP  
STAMPED "LB 7055 PRM"
  - = SET PCP BEING A NAIL AND  
DISK STAMPED "LB 7055 PCP"



PALM BEACH COUNTY  
CONTROL POINT "BOW"  
FND. PALM BEACH  
COUNTY BRASS DISC  
IN CONC. MONUMENT  
N 855815.3590  
E 853660.2760

SOUTHWEST CORNER  
SECTION 32-43-40  
CCR 53929  
N 853604.942  
E 858748.031  
PBC PUBLISHED POSITION  
NOT FOUND

STATE ROAD 80  
COUNTY ROAD 441  
203' PUBLIC R/W  
FDOT R/W MAP SECTION 93120-2515  
SHEET 5 OF 14, DATED 05/23/84  
(SOUTHERN BOULEVARD)

PARCEL 101  
FDOT R/W PER  
(ORB 4891, PG. 865, PBCR)

THIS INSTRUMENT WAS  
PREPARED BY JIM SULLIVAN